

SSIS INTEGRATION TOOLKIT FOR XERO

SSIS Integration Toolkit for Xero is a cost-effective, easy-to-use and high-performance data integration solution for Xero Online, utilizing Microsoft SQL Server Integration Services (SSIS) as the ETL platform and data load engine.

DATA INTEGRATION MADE EASY

SSIS Integration Toolkit is designed with the goal in mind that it helps maximize your development productivity by providing you a streamlined development experience. The tool handles all the intricate details involved in working with the Xero data model and business logics, so that you do not have to, therefore you can spend more time on your data rather than on the tool.

KEY FEATURES

- Complimented by SSIS capabilities, we offer the most feature-rich data integration solution for Xero, which enables data integration between Xero and virtually any other database or application systems.
- Support for reading/writing data to/from Xero.
- Refresh Component button to retrieve latest metadata from Xero.
- Starting with the Free Developer License for any interactive use, we offer the most flexible licensing model.

MAIN COMPONENTS

XERO CONNECTION MANAGER

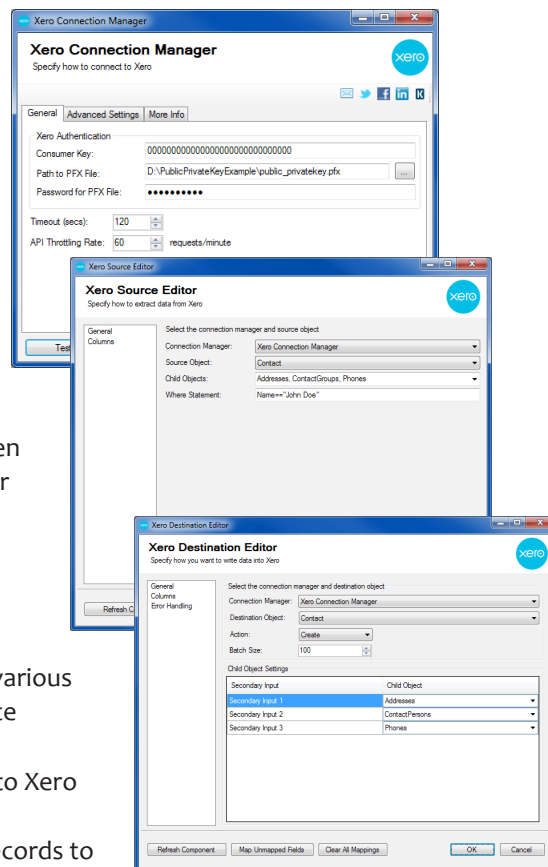
- Supports connection to Xero through the Xero API.
- Option to work around intermittent errors by making retry service calls.
- API Throttle Rate setting to prevent the Xero server from declining request.

XERO SOURCE COMPONENT

- Facilitates reading data from Xero.
- Supports reading from Xero Objects and Child Objects.
- Child Objects drop-down is enabled when the Source Object specified contains 1 or more readable child objects.
- Option to filter data using Where Statement.

XERO DESTINATION COMPONENT

- Facilitates writing data into Xero using various actions such as Create, Update, or Delete actions.
- Supports secondary input for mapping to Xero Child Objects.
- Batch Size lets you specify how many records to send per service call to Xero.
- 3 Error Handling Mechanism.
- Advanced filtering capabilities for Xero field mappings.



BENEFITS

- One single solution that works with Xero accounting software.
- The toolkit helps you manage all the intricate details involved in working with the Xero data model.
- Easy learning curve, consistent application interface, familiar development experience within SQL Server Business Intelligence development environment (Visual Studio).
- Free developer license is available for any interactive use without any limitations.

SYSTEM REQUIREMENTS

- Xero
- SQL Server Integration Services
 - Azure SQL
 - Microsoft SQL Server 2017
 - Microsoft SQL Server 2016
 - Microsoft SQL Server 2014
 - Microsoft SQL Server 2012
 - Microsoft SQL Server 2008 R2
 - Microsoft SQL Server 2008
 - Microsoft SQL Server 2005

ABOUT KINGSWAYSOFT

KingswaySoft is a leading provider of data integration solutions for enterprise software. Organizations from more than 75 countries rely on our solutions to drive their business data efficiency.

Our primary mission is to help our customers to be successful in their business by providing them with quality software products and innovative integration solutions at a competitive price.