

SSIS INTEGRATION TOOLKIT FOR SAP

The **SSIS Integration Toolkit for SAP** is an easy-to-use and cost-effective data integration solution for the SAP platform, by leveraging the full power of Microsoft SQL Server Integration Services (SSIS).

DATA INTEGRATION MADE EASY

SSIS Integration Toolkit for SAP is designed with the goal of maximizing your development productivity by providing a streamlined development experience. The tool handles all the intricate details involved in working with the SAP data model and system logics, so you can spend more time on your data rather than on the tool. Integration can be done in minutes using drag & drop features and visual mapping.

KEY FEATURES

- SSIS Data Flow Components designed specifically for handling the unique complexities inherent in SAP ECC and S/4HANA Systems.
- Read and retrieve data from your SAP instance with ease using SAP components.
- Fully customizable RFC/BAPI invocations for advanced and sophisticated integration.
- Robust error-handling settings to handle complex scenarios and error situations.
- Starting with the Free Developer License for any interactive use, we offer the most flexible licensing model.

MAIN COMPONENTS

SAP CONNECTION MANAGER

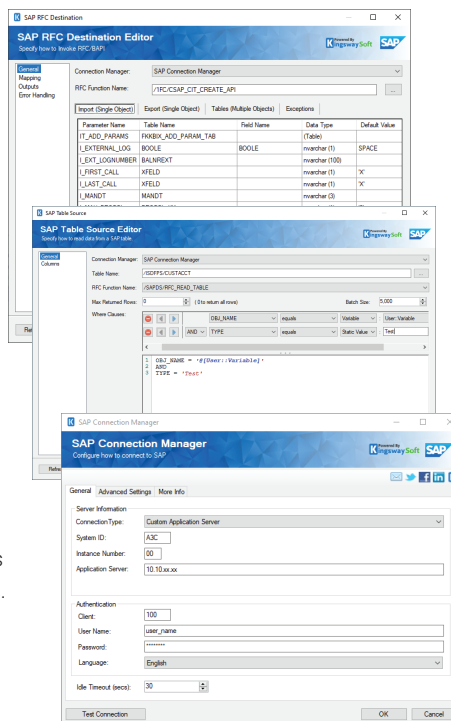
- The SAP Connection Manager facilitates connection with SAP servers directly within SSIS.
- Provides various settings, such as server information, authentication details, and advanced network security options for customized and secure connections.
- Offers robust security features like Active Secure Network Communication and Quality of Protection, tracing options with various levels and set a trace directory for monitoring and analysis.

SAP TABLE SOURCE COMPONENT

- The source component allows you to read and retrieve data from SAP tables.
- Enables you to specify the table or RFC function and configure data retrieval parameters such as batch size and where clauses.
- Provides a clear overview of available columns and options to filter/hide fields for a streamlined data mapping process.
- Allows you to limit the number of returned rows and specifying batch sizes help optimize performance and manage large datasets effectively.

SAP DESTINATION COMPONENT

- The destination component allows you to manage how data is written SAP via native RFC APIs.
- Designed to be working as either a source component or a destination component in order to facilitate different integration needs.
- Supports complex input and output configurations for maximum flexibility.
- Supports dynamic updates through the SSIS Expression Editor and refresh metadata with the Refresh Component feature to keep your data integration process efficient and current.
- Provides options to fail on error, redirect erroneous rows to error output, or ignore errors, ensuring robust error management and data integrity.



BENEFITS

- Efficient and reliable data integration between SAP and any other applications or data sources.
- Powered by the SSIS ETL engine, developers can quickly integrate SAP with virtually any other application or data system.
- Powerful components specifically designed for handling the unique complexities inherent in SAP applications.
- SSIS Integration Toolkit for SAP is shipped with a Connection Manager, a Source, and a Destination component to facilitate easy integration with SAP instances.
- Support both ECC and S/4HANA systems.

SYSTEM REQUIREMENTS

SAP

- SAP ECC On-Premise
- SAP ECC Cloud
- SAP S/4HANA On-Premise
- SAP S/4HANA Cloud

SQL Server Integration Services

- Azure SQL
- Microsoft SQL Server 2022
- Microsoft SQL Server 2019
- Microsoft SQL Server 2017
- Microsoft SQL Server 2016
- Microsoft SQL Server 2014
- Microsoft SQL Server 2012

ABOUT KINGSWAYSOFT

KingswaySoft is a leading provider of data integration solutions for enterprise software. Organizations from more than 90 countries rely on our solutions to drive their business data efficiency.

Our primary mission is to help our customers to be successful in their business by providing them with quality software products and innovative integration solutions at a competitive price.