

SSIS INTEGRATION TOOLKIT FOR ORACLE MARKETING CLOUD

SSIS Integration Toolkit for Oracle Marketing Cloud is a cost-effective, easy-to-use and high-performance data integration solution for Oracle Eloqua, utilizing Microsoft SQL Server Integration Services (SSIS) as the ETL platform and data load engine.

DATA INTEGRATION MADE EASY

SSIS Integration Toolkit is designed with the goal in mind that it helps maximize your development productivity by providing you a streamlined development experience. The tool handles all the intricate details involved in working with the Oracle Eloqua data model and business logics, so that you do not have to, therefore you can spend more time on your data rather than on the tool.

KEY FEATURES

- Complimented by SSIS capabilities, we offer the most feature-rich data integration solution for Oracle Marking Cloud, which enables data integration between Oracle Eloqua and virtually any other database or application systems.
- Support for reading/writing data to/from Oracle Eloqua.
- Refresh Component button to retrieve latest metadata from Oracle Eloqua.
- Starting with the Free Developer License for any interactive use, we offer the most flexible licensing model.

MAIN COMPONENTS

ORACLE ELOQUA CONNECTION MANAGER

- Supports connection to Oracle Eloqua through either Basic or OAuth2 authentication.
- Option to work around intermittent errors by making retry service calls.

ORACLE ELOQUA SOURCE COMPONENT

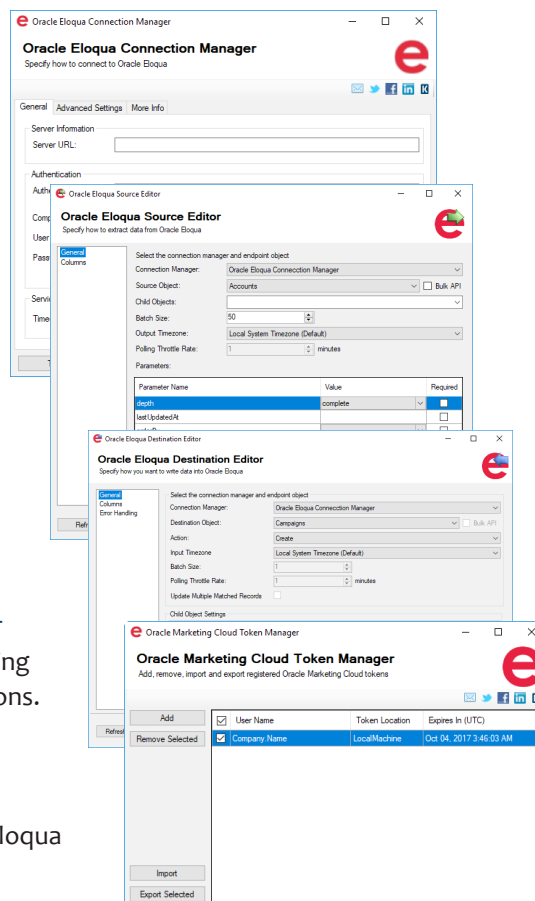
- Facilitates reading data from Oracle Eloqua.
- Support for reading from Child Objects with additional outputs.
- Parameter settings option allows developers to filter and sort records being retrieve. Setting options adapt to the selected object's specific parameter options.

ORACLE ELOQUA DESTINATION COMPONENT

- Facilitates writing data into Oracle Marketing Cloud using Create, Update, or Delete actions.
- Supports multiple inputs to write to any necessary Child Object(s).
- 3 Error Handling Mechanism.
- Advanced filtering capabilities for Oracle Eloqua field mappings.

ORACLE MARKETING CLOUD TOKEN MANAGER

- Utility external to SSIS that allows you to add, remove, import, and export your Oracle Marketing Cloud Tokens from machine to machine.



BENEFITS

- One single solution that works with Oracle Marketing Cloud.
- The toolkit helps you manage all the intricate details involved in working with the Oracle Eloqua data model.
- Easy learning curve, consistent application interface, familiar development experience within SQL Server Business Intelligence development environment (Visual Studio).
- Free developer license is available for any interactive use without any limitations.

SYSTEM REQUIREMENTS

- Oracle Marketing Cloud
 - Oracle Eloqua
- SQL Server Integration Services
 - Azure SQL
 - Microsoft SQL Server 2017
 - Microsoft SQL Server 2016
 - Microsoft SQL Server 2014
 - Microsoft SQL Server 2012
 - Microsoft SQL Server 2008 R2
 - Microsoft SQL Server 2008
 - Microsoft SQL Server 2005

ABOUT KINGSWAYSOFT

KingswaySoft is a leading provider of data integration solutions for enterprise software. Organizations from more than 75 countries rely on our solutions to drive their business data efficiency.

Our primary mission is to help our customers to be successful in their business by providing them with quality software products and innovative integration solutions at a competitive price.