

SSIS Integration Toolkit for Microsoft Dynamics CRM

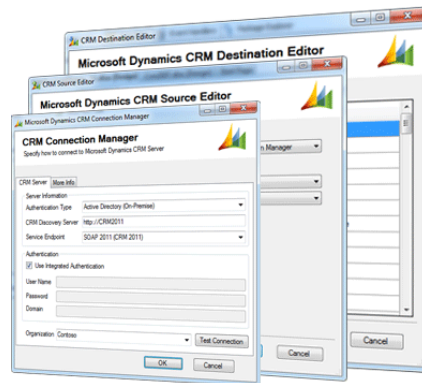
SSIS Integration Toolkit for Microsoft Dynamics CRM is a cost-effective data integration library that works for Microsoft Dynamics CRM by leveraging the full power of Microsoft SQL Server Integration Services (SSIS).

KEY FEATURES

- Native CRM 2011 SOAP interface support
- Support for Microsoft Dynamics CRM 2011 and 4.0
- Support for On-premise, IFD (federated) and Online deployments
- Support for CRM Entity or FetchXML query as data source in CRM source component
- Support for Create/Update/Delete/Upsert actions in CRM destination component.
- Native support of CRM many-to-many relationship to associate or disassociate CRM records in CRM destination component by using Create or Delete action

INCLUDED COMPONENTS

- Microsoft Dynamics CRM Connection Manager
- Microsoft Dynamics CRM Source Component
- Microsoft Dynamics CRM Destination Component



OTHER NOTABLE FEATURES

SSIS Integration Toolkit includes a unique Upsert functionality for CRM Destination Component. Using Upsert action, you have three matching options to choose how to identify whether it is an existing record in CRM for update, or it's something not in the system that the component should create for you (insert). The three options include a combination of manually selected fields, CRM primary key, or CRM duplicate detection.

SSIS Integration Toolkit includes many features that help improve the productivity of your ETL development. In CRM destination component, we provide an automatic mapping feature, so that after a destination entity has been specified, the component will automatically match CRM fields to the columns from upstream components based on their names.

When writing data to Microsoft Dynamics CRM, dealing with picklist / optionset fields imposes quite some challenges since CRM can only take integer numbers for them. Microsoft Dynamics CRM destination component has made this significantly easy. For any picklist / optionset fields (including statecode and statuscode fields), you can use either internal integer values, or their string values (user localized labels). CRM destination component will automatically convert them into the values that are acceptable by Microsoft Dynamics CRM server.

ABOUT KINGSWAYSOFT

KingswaySoft is a software company specializing in Microsoft Dynamics CRM and Business Intelligence development.

Our primary mission is to help our customers to be successful in their business by providing them with quality software products and innovative solutions at a competitive price.

LEARN MORE

www.kingswaysoft.com

BENEFITS

- Leverage the full power and flexibility of Microsoft SQL Server Integration Services (SSIS)
- One single solution that works for both CRM 4 & 2011, and all three deployment options, including on-premise, online, or partner-hosted federation
- Native CRM 2011 SOAP endpoint support
- The library helps you manage all the intricacies of working with different interfaces available on Microsoft Dynamics CRM platform, with the full possibility to support any future service interfaces that are interoperable
- Easy learning curving, consistent application interface, familiar development experience within SQL Server Business Intelligence Development Studio

SYSTEM REQUIREMENTS

- Microsoft Dynamics CRM
 - Microsoft Dynamics CRM Server 4.0
 - Microsoft Dynamics CRM Server 2011
 - Microsoft Dynamics CRM Online
- Microsoft SQL Server
 - Microsoft SQL Server 2005
 - Microsoft SQL Server 2008
 - Microsoft SQL Server 2008 R2
 - Microsoft SQL Server 2012