

# SSIS INTEGRATION TOOLKIT FOR TEAM FOUNDATION SERVER

SSIS Integration Toolkit for Team Foundation Server is a cost-effective, easy-to-use and high-performance data integration solution for TFS, utilizing Microsoft SQL Server Integration Services (SSIS) as the ETL platform and data load engine.

## DATA INTEGRATION MADE EASY

SSIS Integration Toolkit is designed with the goal in mind that it helps maximize your development productivity by providing you a streamlined development experience. The tool handles all the intricate details involved in working with the TFS data model and business logics, so that you do not have to, therefore you can spend more time on your data rather than on the tool.

## KEY FEATURES

- Complimented by SSIS capabilities, we offer the most feature-rich data integration solution for Team Foundation Server, which enables data integration between TFS and virtually any other database or application systems.
- Support for reading/writing data to/from TFS.
- Refresh Component button to retrieve latest metadata from TFS.
- Starting with the Free Developer License for any interactive use, we offer the most flexible licensing model.

## MAIN COMPONENTS

### TEAM FOUNDATION CONNECTION MANAGER

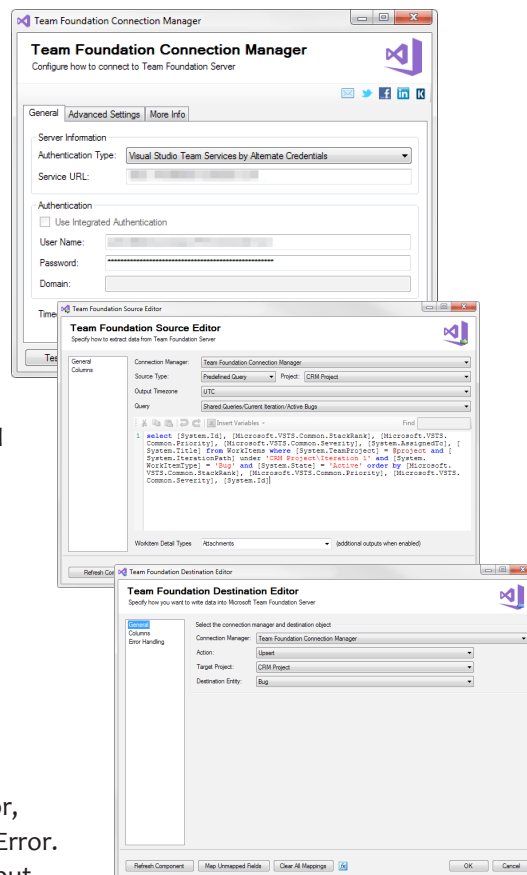
- Supports connection to Team Foundation Server through the TFS API.
- Option to work around intermittent errors by making retry service calls.

### TEAM FOUNDATION SOURCE COMPONENT

- Facilitates reading data from Team Foundation Server.
- Option for retrieving data from TFS based on predefined or custom query.
- Support for retrieving attachments and comments.

### TEAM FOUNDATION DESTINATION COMPONENT

- Facilitates writing data into Team Foundation Server using various actions such as Create, Update, Delete, or Upsert actions.
- 3 Error Handling Mechanisms: Fail on Error, Redirect Rows to Error Output or Ignore Error.
  - Additional columns added to Error Output when Redirect Rows to Error Output is selected: ErrorCode, ErrorColumn, ErrorMessage.
- Advanced filtering capabilities for TFS field mappings.



## BENEFITS

- One single solution that works with Team Foundation Server.
- The toolkit helps you manage all the intricate details involved in working with the TFS data model.
- Easy learning curve, consistent application interface, familiar development experience within SQL Server Business Intelligence development environment (Visual Studio).
- Free developer license is available for any interactive use without any limitations.

## SYSTEM REQUIREMENTS

- Team Foundation Server
- SQL Server Integration Services
  - Azure SQL
  - Microsoft SQL Server 2019
  - Microsoft SQL Server 2017
  - Microsoft SQL Server 2016
  - Microsoft SQL Server 2014
  - Microsoft SQL Server 2012

## ABOUT KINGSWAYSOFT

KingswaySoft is a leading provider of data integration solutions for enterprise software. Organizations from more than 90 countries rely on our solutions to drive their business data efficiency.

Our primary mission is to help our customers to be successful in their business by providing them with quality software products and innovative integration solutions at a competitive price.