

SSIS INTEGRATION TOOLKIT FOR MICROSOFT SHAREPOINT

SSIS Integration Toolkit for Microsoft SharePoint is a cost-effective, easy-to-use and high-performance data integration solution for Microsoft SharePoint, utilizing Microsoft SQL Server Integration Services (SSIS) as the ETL platform and data load engine.

DATA INTEGRATION MADE EASY

The ultimate goal of the toolkit is to simplify your data integration development work. By utilizing Microsoft SQL Server Integration Services (SSIS) as your data integration platform, you can take advantage of the flexibility and power of SSIS ETL engine, which enables integration with virtually any application or data source that you may need to work with.

KEY FEATURES

- Support for reading/writing data to/from Microsoft SharePoint Lists and Document Libraries via web services
- Capability to read/write to hidden SharePoint Lists and Document Libraries
- Refresh Component button to retrieve latest metadata from the SharePoint server
- Starting with the Free Developer License for any interactive use, we offer the most flexible licensing model
- In addition to the below components also includes the Premium File Pack Source, Destination and File Transfer Task components.

MAIN COMPONENTS

SHAREPOINT CONNECTION MANAGER

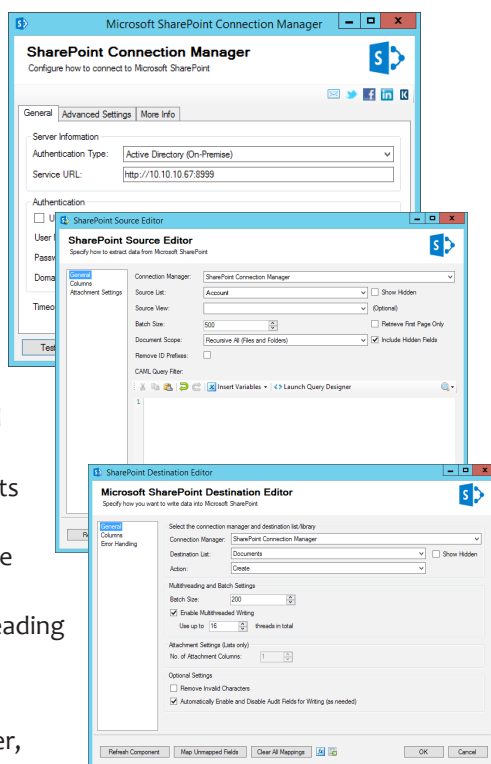
- Option to work around intermittent errors by making retry service calls.
- Support for subsite connection through Service URL

SHAREPOINT SOURCE COMPONENT

- Facilitates reading data (including hidden lists and fields) from Microsoft SharePoint server.
- Capability to perform data filtering through CAML Query Filter with additional support for parameterizing your query using SSIS variables.
- Document Scope feature to specify how to read from Document Libraries.
- Option to download attachments and documents by saving to a file system or to create an SSIS output data column for the downstream pipeline components.
- Option to specify available Source View when reading from SharePoint Lists.

SHAREPOINT DESTINATION COMPONENT

- Support for Create, Update, Delete, CreateFolder, CheckIn, CheckOut and Moderate write actions.
- Support for uploading of attachments for SharePoint.
- Batch Size option to specify how many records to submit to the SharePoint web service each time.
- Advanced filtering capabilities for SharePoint field mappings.
- Support for multithreaded writing using one single configuration.
- Text Lookup feature available when working with lookup fields including lookup references from different subsites.
- 3 Error Handling Mechanism with configurable additional column (SharePoint_ID).



BENEFITS

- One single solution that works Microsoft SharePoint, including 2016, 2013, 2010, 2007, Office 365.
- The toolkit helps you manage all the intricate details involved in working with Microsoft SharePoint model.
- Easy learning curve, consistent application interface, familiar development experience within SQL Server Business Intelligence development environment (Visual Studio).
- Free developer license is available for any interactive use without any limitations.

SYSTEM REQUIREMENTS

- Microsoft SharePoint
 - Microsoft SharePoint 2019
 - Microsoft SharePoint 2016
 - Microsoft SharePoint 2013
 - Microsoft SharePoint 2010
 - Microsoft SharePoint 2007
 - Microsoft SharePoint Office 365
- SQL Server Integration Services
 - Azure SQL
 - Microsoft SQL Server 2019
 - Microsoft SQL Server 2017
 - Microsoft SQL Server 2016
 - Microsoft SQL Server 2014
 - Microsoft SQL Server 2012
 - Microsoft SQL Server 2008 R2
 - Microsoft SQL Server 2008

ABOUT KINGSWAYSOFT

KingswaySoft is a leading provider of data integration solutions for enterprise software. Organizations from more than 90 countries rely on our solutions to drive their business data efficiency.

Our primary mission is to help our customers to be successful in their business by providing them with quality software products and innovative integration solutions at a competitive price.