

SSIS PRODUCTIVITY PACK

DROPBOX COMPONENTS

The Dropbox components within the SSIS Productivity Pack are a cost-effective, easy-to-use and high-performance data integration solution for Dropbox, utilizing Microsoft SQL Server Integration Services (SSIS) as the ETL platform and data load engine.

DATA INTEGRATION MADE EASY

SSIS Productivity Pack is designed with the goal in mind that it helps maximize your development productivity by providing you a streamlined development experience. The tool tries to handle all the details involved in working with the Dropbox data model and business logics, so that you don't have to do so.

KEY FEATURES

- Complimented by SSIS capabilities, we offer a feature-rich data integration solution for Dropbox, which enables data integration between Dropbox and virtually any other database or application systems.
- Support for reading/writing data to/from the Dropbox server.
- Refresh Component button to retrieve latest metadata from the Dropbox server.
- Starting with the Free Developer License for any interactive use, we offer the most flexible licensing model.
- In addition to the below components also the Premium File Pack Source, Destination and File Transfer Task components also support using the Dropbox Connection Manager.

MAIN COMPONENTS

DROPBOX CONNECTION MANAGER

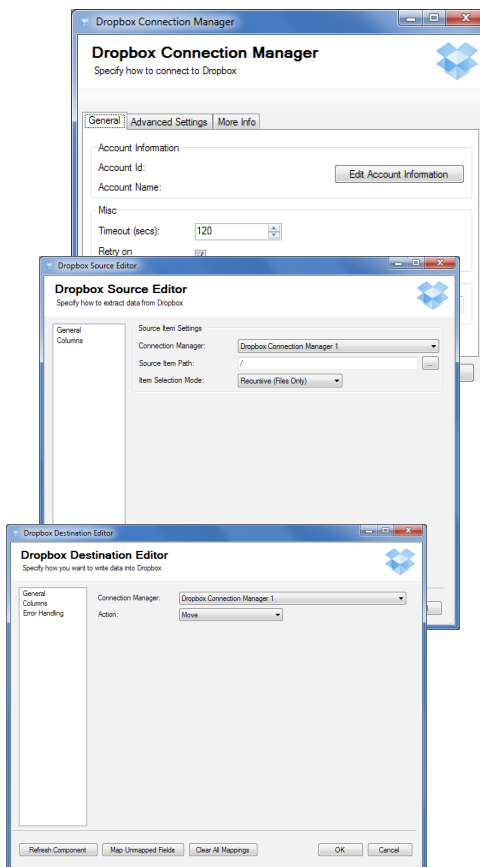
- Supports connection to Dropbox utilizing the Dropbox API.
- Sophisticated support for Dropbox connection using the OAuth authentication process.
- Option to rectify intermittent errors by making retry service calls.

DROPBOX SOURCE COMPONENT

- Facilitates reading data, including file content, from the Dropbox account using the Dropbox API.
- Support for advanced item filtering.
- Option to specify desired Dropbox fields to retrieve for specified objects.

DROPBOX DESTINATION COMPONENT

- Support for Create, Move, Upsert, Delete actions.
- Support for uploading all Dropbox supported file types.
- 3 Error Handling Mechanism with additional configurable columns:
 - DropboxItemSize
 - DropboxItemIsDeleted
 - DropboxItemPath
 - DropboxItemIsDirectory
- Advanced filtering capabilities for Dropbox field mappings.



BENEFITS

- One single solution that works for Dropbox.
- The toolkit helps you manage all the intricate details involved in working with Dropbox data model.
- Easy learning curve, consistent application interface, familiar development experience within SQL Server Business Intelligence development environment (Visual Studio).
- Free developer license is available for any interactive use without any limitations.

SYSTEM REQUIREMENTS

- Dropbox Account
- Microsoft SQL Server
 - Microsoft SQL Server 2017
 - Microsoft SQL Server 2016
 - Microsoft SQL Server 2014
 - Microsoft SQL Server 2012
 - Microsoft SQL Server 2008 R2
 - Microsoft SQL Server 2008
 - Microsoft SQL Server 2005

ABOUT KINGSWAYSOFT

KingswaySoft is a leading provider of high-performance data integration solutions using SSIS as the ETL platform. Organizations from more than 70 countries rely on our solutions to drive their business data efficiency.

Our primary mission is to help our customers to be successful in their business by providing them with quality software products and innovative integration solutions at a competitive price.